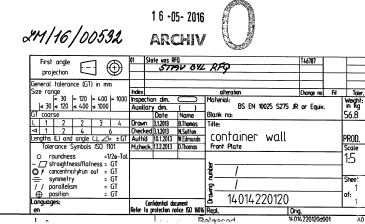
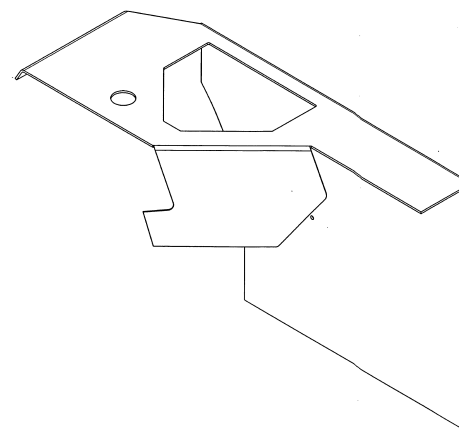
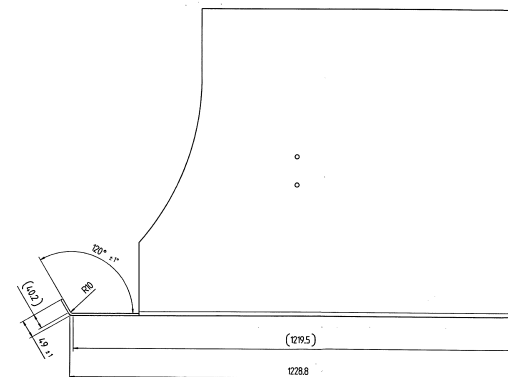
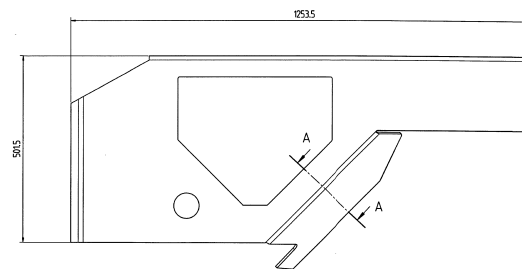


JANA PROKEŠ

A diagram of a roof truss section. It shows a horizontal base of length 775. A vertical line segment of length 266.3 is drawn from the left end of the base. A diagonal line segment connects the top of this vertical segment to the right end of the base, forming a right-angled triangle. The angle between the vertical segment and the diagonal is labeled 70°. The diagonal segment is labeled 266.3.

[illegible]